



*EBAN 3D Collaborative™*  
**Defeating Diabetes Disparities**

Team Name: Center for International Health

Date: February 12<sup>th</sup>, 2014

# Team Members

Name	Credentials	Title	Organization
Mike Westerhaus		Physician Chief	HealthPartners
Larisa Turin		Clinic Manager	HealthPartners
Sharon Brown-Rowe		Business Systems Supervisor	HealthPartners
Mohamud Aden		Interpreter	HealthPartners
Uon Chhim		LPN	HealthPartners
Dahir Guled		Community Partner	
Frewoini Haile		Community Partner	Flamingo Restaurant
Shegitu Kebede		Community Partner	Flamingo Restaurant
Jodi Lavin-Tompkins		Certified Diabetes Educator	HealthPartners
Ann Moyer		Pharmacist	HealthPartners
Fowsia Musse		RN	HealthPartners
Tracey Newell		Dietitian	HealthPartners
Allison Johnson		Quality Improvement	HealthPartners

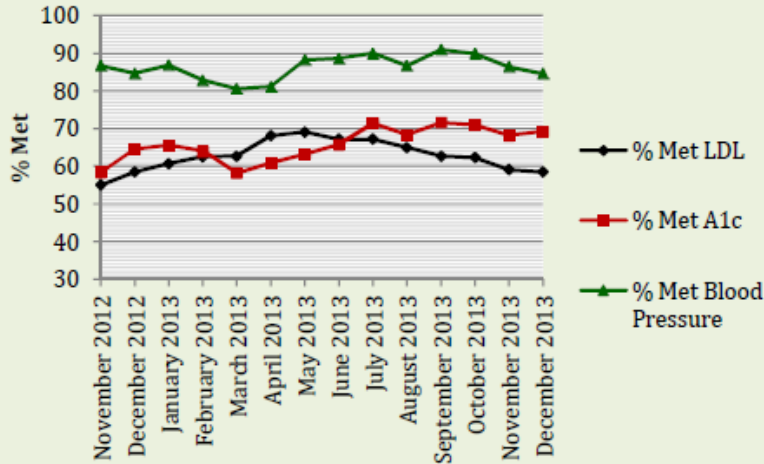


# Aim

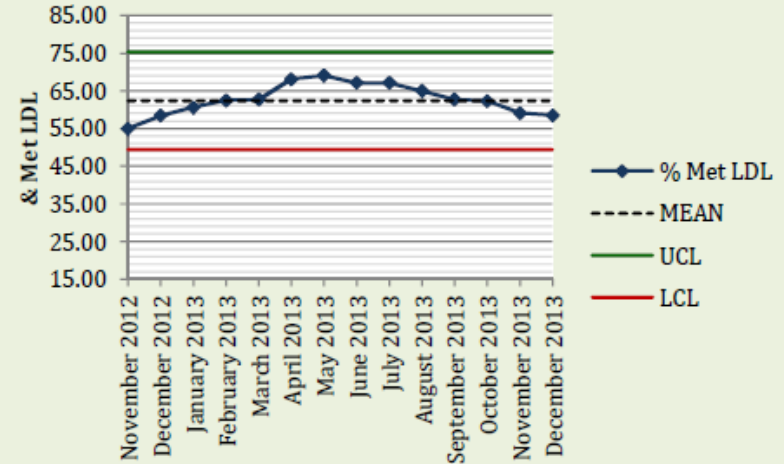
- Ultimate Goal – To increase ideal cholesterol control amongst East African patients living with diabetes who receive care at CIH from 62.5% to 70%
- Goal – To improve cholesterol control through intensified, non-clinic based engagement with patients
- Aim – Patients will recognize the importance of achieving cholesterol control and ways to accomplish this through lifestyle and medications



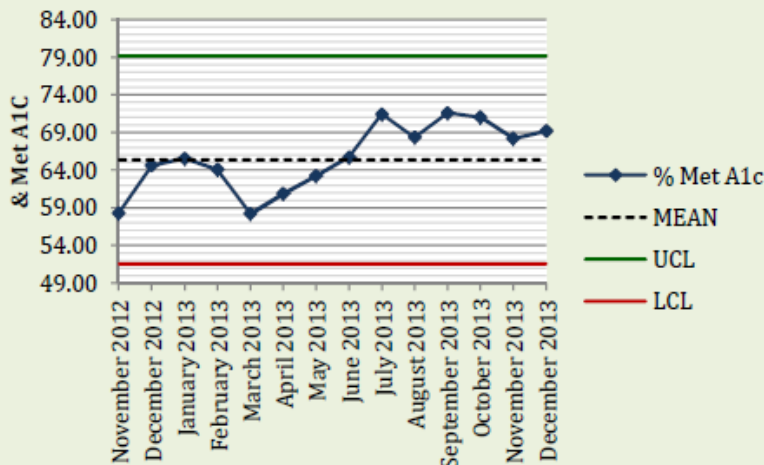
Center for International Health - EBAN Diabetes Measures



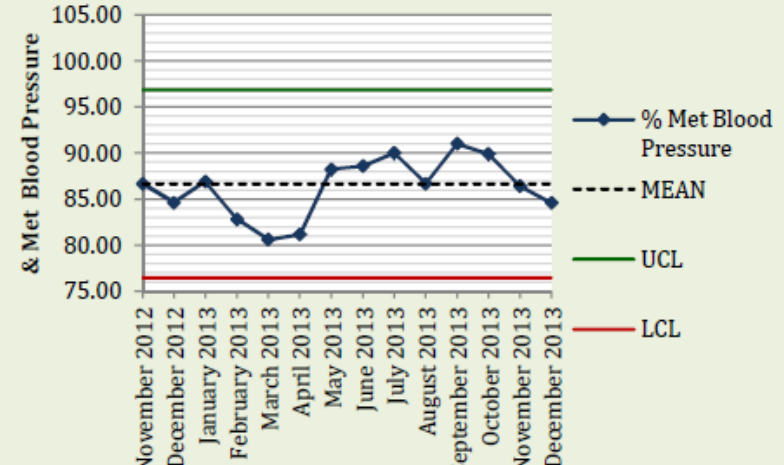
Center for International Health - LDL Control Chart



Center for International Health - A1c Control Chart



Center for International Health - Blood Pressure Control Chart



Patient declined to listen to the telephone message  
Reason stated \_\_\_\_\_

Patient declined to take survey  
Reason stated \_\_\_\_\_

### Diabetes Phone Message Patient Survey

Did you find this recorded information useful? Yes No

Did you find this recorded information easy to understand? Yes No

Are you planning to make any changes to your diet based on the recorded message? Yes No

Are you planning to exercise more after listening to the recorded message? Yes No

What did you like about the recorded message? \_\_\_\_\_  
\_\_\_\_\_

What did you not like about the recorded message? \_\_\_\_\_  
\_\_\_\_\_

Are you interested in hearing other message recordings similar to this one? Yes No

If yes, what topics would you like to hear more about? (check all areas of interest):

Diet

Exercise

Medication for diabetes

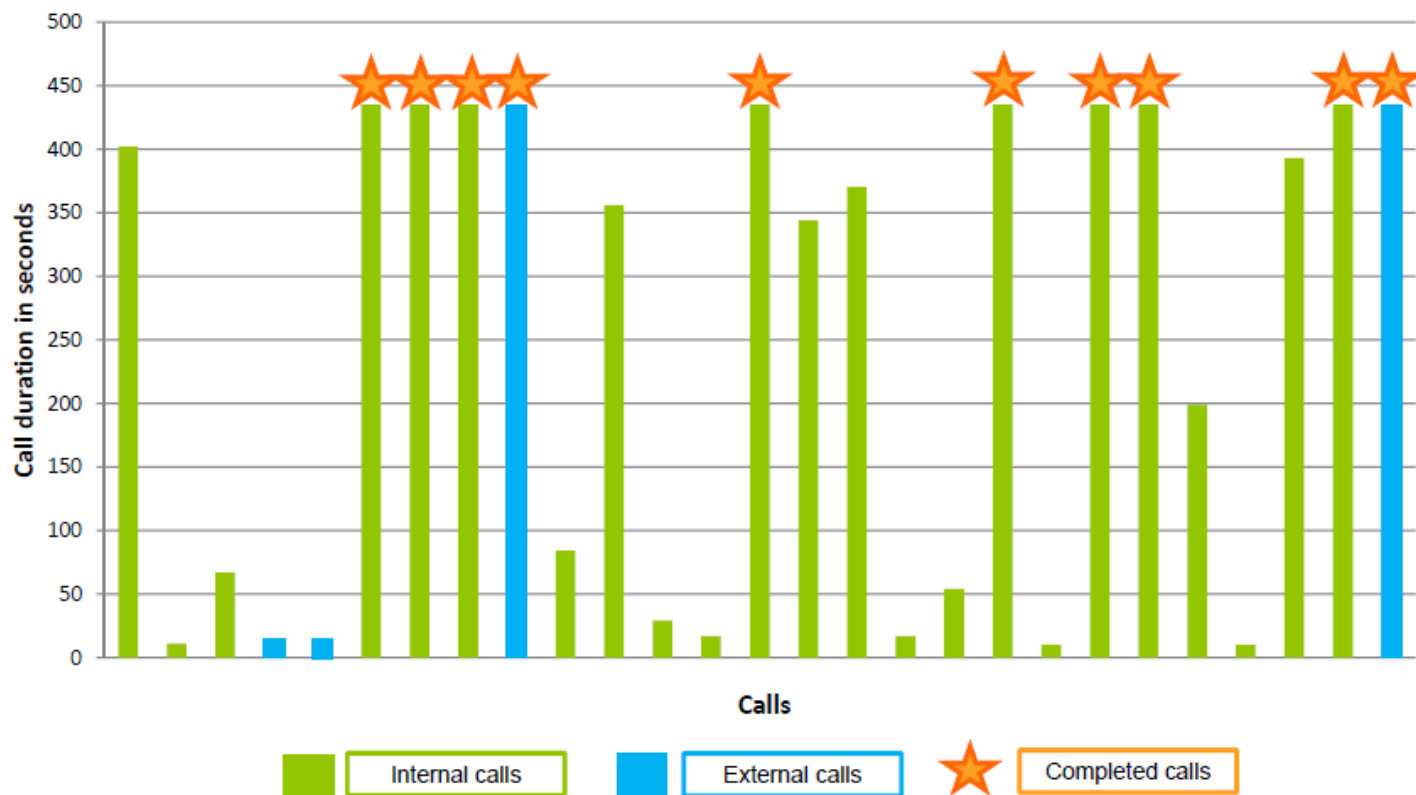
What is diabetes?

Other \_\_\_\_\_

## Recorded message call durations

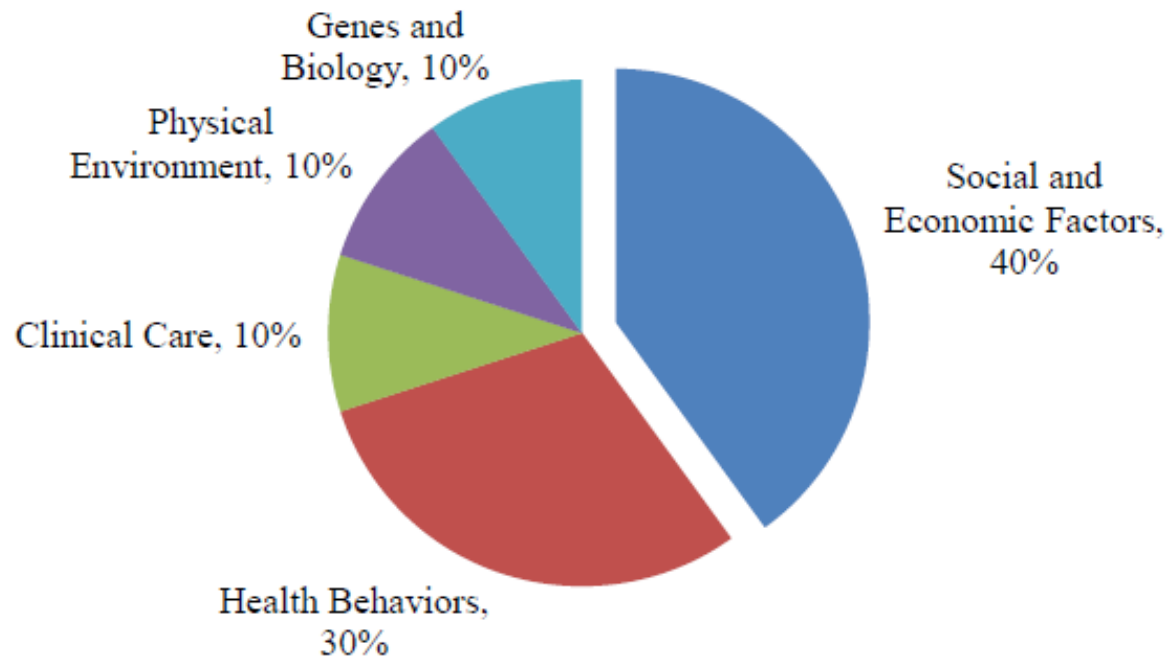
12/2/13 through 1/3/14

excluding calls <10 seconds long  
excluding external calls made on 12/4/13





**Figure 1: The Determinants of Health**





# Building Communities Where the Healthy Choice is the Easy Choice



figure 7 Healthy neighborhoods, healthy families and kids, and economic opportunity and mobility are interconnected. Building places where healthy behaviors are possible requires a focus on all three.

